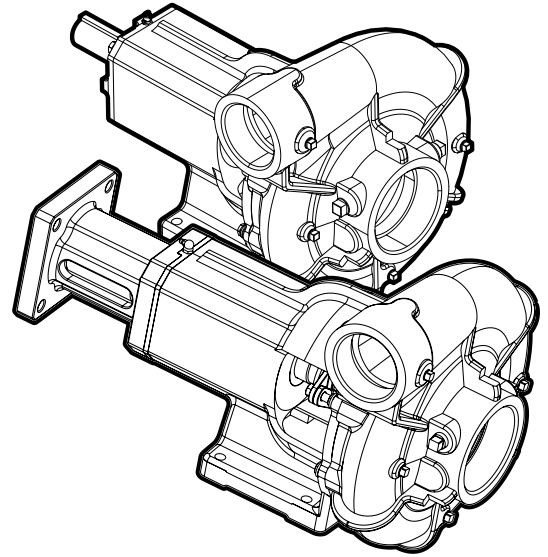


CENTRIFUGAL PUMPS

WATER TRUCK 9"

FEATURES

- Volute: Heavy-duty cast iron construction; back pullout design; can be rotated for ease of installation
- Impeller: Cast iron enclosed design for high efficiency; double keyed for improved reliability
- Seal: Packed box or mechanical seal with carbon/ceramic faces; Nitrile elastomers; 300 series stainless steel components
- Bearing Frame: Heavy-duty iron; oversized shaft; max-life bearings; external grease lubrication
- Mounting: Vertical or horizontal
- Standard and hydraulic fit
- Replaceable shaft sleeve
- Grease fittings for lubrication



SPECIFICATIONS

- Capacities to 1000 gpm
- Heads to 260 feet
- 250 psi maximum working pressure
- 212 °F maximum temperature
- Available clockwise or counterclockwise rotation
- NPT and grooved connection options

Discharge	Suction
3"	4"

APPLICATIONS

- Irrigation
- Commercial
- Construction
- Municipal
- Mining
- Light Industrial
- Water Trucks

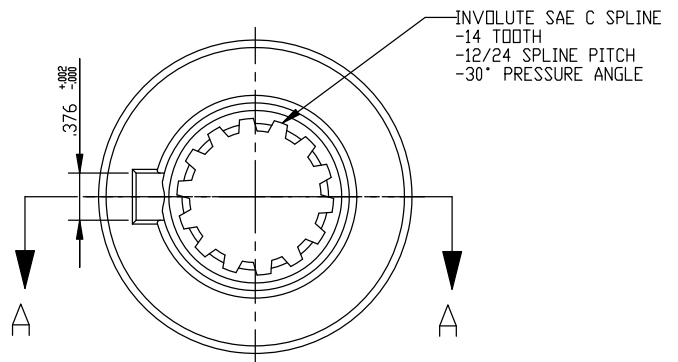
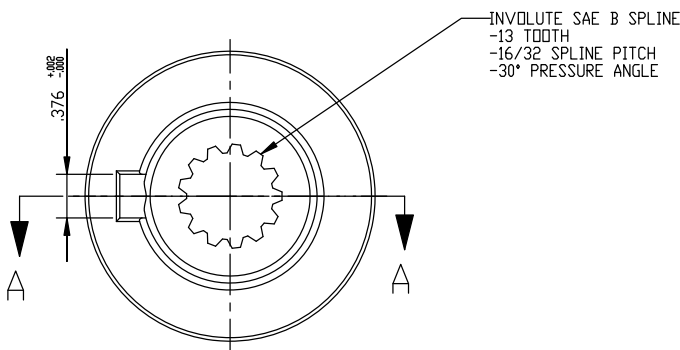
CENTRIFUGAL PUMPS

WATER TRUCK 9"

ORDERING INFORMATION

9" Nominal Impeller Diameter							
Pump Model	Volute Design	Rotation	Shaft Seal	HYD. Fit	Model Description	Order No.	Wt. (lbs)
3 x 4 - 9	NPT	CW	Packing	-	XS439-BFNP-CW	64040309100	135
	NPT	CCW	Packing	-	XS439-BFNP-CCW	64040309200	135
	Grooved	CW	Packing	-	XS439-BFVP-CW	64040309101	135
	Grooved	CCW	Packing	-	XS439-BFVP-CCW	64040309201	135
	NPT	CW	Mechanical	-	XS439-BFNM-CW	65040309100	135
	NPT	CCW	Mechanical	-	XS439-BFNM-CCW	65040309200	135
	Grooved	CW	Mechanical	-	XS439-BFVM-CW	65040309101	135
	Grooved	CCW	Mechanical	-	XS439-BFVM-CCW	65040309201	135
3 x 4 - 9	NPT	CW	Packing	B	XS439-HBNP-CW	68040309100	145
	NPT	CCW	Packing	B	XS439-HBNP-CCW	68040309200	145
	Grooved	CW	Packing	B	XS439-HBVP-CW	68040309101	145
	Grooved	CCW	Packing	B	XS439-HBVP-CCW	68040309201	145
	NPT	CW	Mechanical	B	XS439-HBNM-CW	69040309100	145
	NPT	CCW	Mechanical	B	XS439-HBNM-CCW	69040309200	145
	Grooved	CW	Mechanical	B	XS439-HBVM-CW	69040309101	145
	Grooved	CCW	Mechanical	B	XS439-HBVM-CCW	69040309201	145
	NPT	CW	Packing	C	XS439-HCNP-CW	68040309300	145
	NPT	CCW	Packing	C	XS439-HCNP-CCW	68040309400	145
	Grooved	CW	Packing	C	XS439-HCVP-CW	68040309301	145
	Grooved	CCW	Packing	C	XS439-HCVP-CCW	68040309401	145
	NPT	CW	Mechanical	C	XS439-HCNM-CW	69040309300	145
	NPT	CCW	Mechanical	C	XS439-HCNM-CCW	69040309400	145
	Grooved	CW	Mechanical	C	XS439-HCVM-CW	69040309301	145
	Grooved	CCW	Mechanical	C	XS439-HCVM-CCW	69040309401	145

NOTE: There will be an impeller trimming charge applied for any non-standard impeller trim; consult price sheets for list price adders; B Fit: Involute SAE B spline, 13 tooth, 16/32" spline pitch, 30° pressure angle; C Fit: Involute SAE C spline, 14 tooth, 12/24" spline pitch, 30° pressure angle

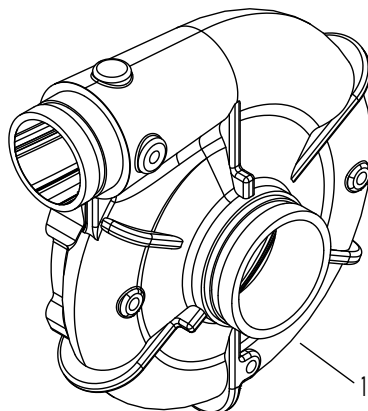
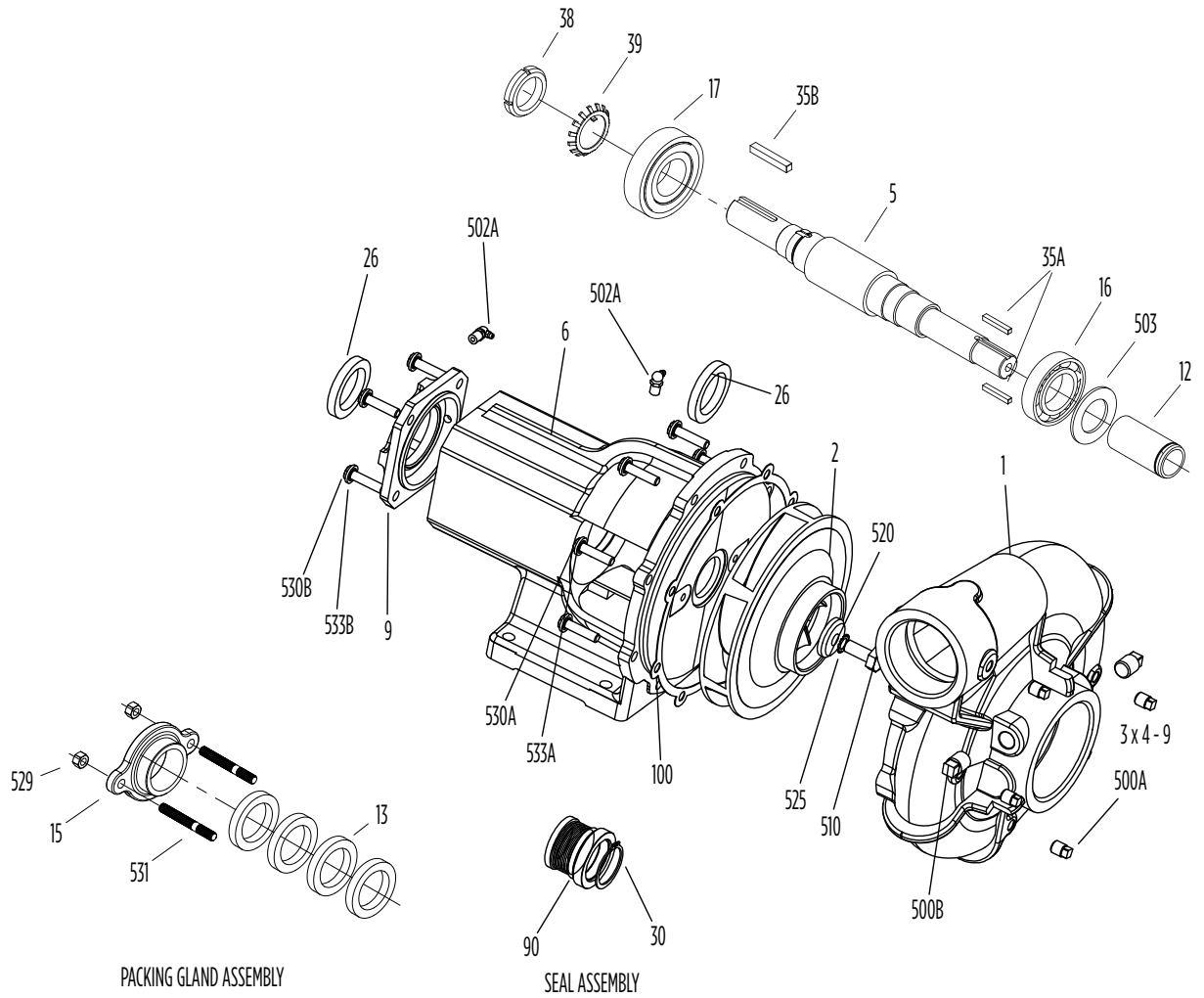


CENTRIFUGAL PUMPS

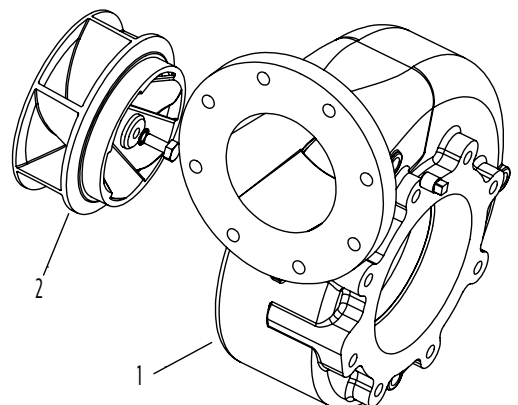
WATER TRUCK 9"

MATERIALS AND PARTS

BEARING FRAME



Grooved VOLUTE



6 x 8 - 9 FLANGE

CENTRIFUGAL PUMPS

WATER TRUCK 9"

MATERIALS AND PARTS

BEARING FRAME

Fig. No.	Part Description	Part No.		Materials of Construction
		XS3x4-9	*XS6x8-9	
1	Volute Case, Flanged	N/A	*305462013	Cast Iron, ASTM-48 Class 30
1	Volute Case, NPT, CW	305462001	N/A	Cast Iron, ASTM-48 Class 30
1	Volute Case, NPT, CCW	305462034	N/A	Cast Iron, ASTM-48 Class 30
1	Volute Case, Grooved, CW	305462019	N/A	Cast Iron, ASTM-48 Class 30
1	Volute Case, Grooved, CCW	305462035	N/A	Cast Iron, ASTM-48 Class 30
2	Impeller, CW	305462008	305462018	Cast Iron, ASTM-48 Class 30
2	Impeller, CCW	305462036	N/A	Cast Iron, ASTM-48 Class 30
5	Pump Shaft*	SEE SHAFT KIT		Stressproof - AISI 1144
6	Bearing Frame, Packed Style	305462037		Cast Iron, ASTM-48 Class 30
6	Bearing Frame, Mechanical Seal Style	305462038		Cast Iron, ASTM-48 Class 30
9	Bearing Frame Cover	305462021		Cast Iron, ASTM-48 Class 30
12	Shaft Sleeve	305462022		416 stainless steel
13	Packing Ring Set	305462023		Graphite/cotton
15	Packing Gland (1 piece)	305462044		316 stainless steel
16	Bearing, Pump Side	305462025		Steel
17	Bearing, Drive Side	305463145		Steel
26B	Lip Seal, Drive Side	305463148		Nitrile
30	Retaining Ring, Mechanical Seal	305462028		316 stainless steel
35	Key, Impeller Shaft (2 pack)	305450006		316 stainless steel
38	Bearing Nut	305463039		Carbon steel
39	Lock Washer, Bearing	305463042		Carbon steel
90	Mechanical Shaft Seal	305462029		Carbon/ceramic/nitrile/316 stainless steel
100	Gasket, Volute Case	305463138		NA60
500A	Pipe Plug (4 pack)	305463020	305463144	CAD-plated steel
500B	Pipe Plug (4 pack)	305463144		CAD-plated steel
502	Grease Zerk Straight (3 pack)	305463160		CAD-plated steel
503	Water Slinger	305464015		Neoprene
510	Hex Cap Screw, Impeller	305463185		17-4SS
520	Washer, Impeller	305462031		300 Series stainless steel
525	Lock Washer, Impeller	305462032		316 stainless steel
529	Nut, Packing Gland (4 pack)	305463033		Zinc-plated steel
530A	Hex Cap Screw, Volute Case (12 pack)	305463202	N/A	Zinc-plated steel
530A	Stud, Volute Case (8 pack)	N/A	305463114	18-8 stainless steel
530B	Hex Cap Screw, Bearing Cover (8 pack)	305463053		Zinc-plated steel
531	Stud, Packing Gland (2 pack)	305463174		Zinc-plated steel
533A	Lock Washer, Volute Case (8 pack)	305463135		Zinc-plated steel
533B	Lock Washer, Bearing Cover (8 pack)	305463135		Zinc-plated steel
Not Shown	Hex Nut, Volute Case (8 pack)	N/A	305463033	Zinc-plated steel
Not Shown	Shaft Key, Drive Side (2 pack)	305464032		316 stainless steel
Not Shown	Shaft Replacement Kit (Includes 5, 12, 16, 17, 35, 42, 43)	305731901	305731903	Misc.

NOTE: The drive side shaft bearing assembly utilized a thrust ring #42 (305462027) and retainer #43 (305462026) prior to June 2013, which has been replaced with the current bearing nut #38 (305463039), lock washer #39 (305463042), and updated lip seal #26B (305463148)

*No longer available

*Complete pump no longer available

CENTRIFUGAL PUMPS

WATER TRUCK 9"

MATERIALS AND PARTS

HYDRAULIC

