



FPS

WATER TRUCK PUMPS

Franklin Electric has the pump you need for your water truck applications, over-the-road applications, large off-road applications, and self-filling applications.



Franklin Electric

franklinwater.com



FRANKLIN ELECTRIC KNOWS PUMPS

Franklin Electric is a global leader in the production and marketing of systems and components for the movement of water and fuel. Recognized as a technical leader in its specialties, Franklin Electric serves customers around the world in residential, commercial, agricultural, industrial, and municipal water applications.

RELIABILITY IS THE HEART OF OUR BUSINESS

Our commitment to building reliable products begins with innovative design. We understand that our products must prove themselves through a long and dependable operating life. In addition to great designs and robust components, every product we offer has been thoroughly tested in the lab and proven in the field. Franklin Electric recognizes that our customers depend on our products to deliver every day over the long haul. We take that responsibility seriously. Not only do we stake our reputation on it, it's the heart of our business.



XS SERIES SETS A HIGHER STANDARD

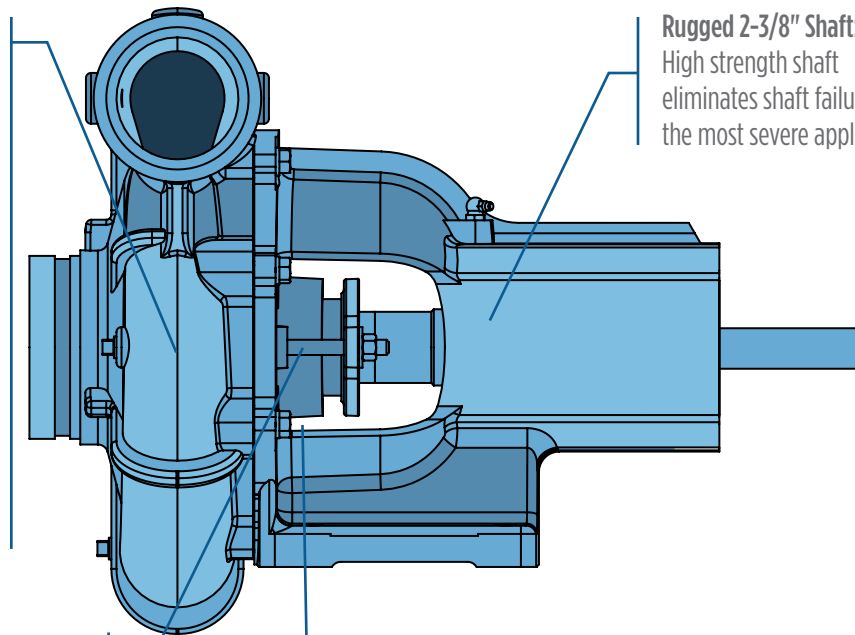
- **Designed for Longevity:** Using the latest design technology producing maximum bearing life.
- **Rigidly-Mounted Thrust Bearing:** Maximized dependability with minimal maintenance, thrust bearing will handle extreme loads even in the harshest applications.
- **Available in Hydraulic Drive**
- **Oversized Lubricant Reservoir:** Provides lubrication, extending bearing life while reducing maintenance.

Maximum Application Versatility:
Volute on the XS439 is available in clockwise and counterclockwise rotations

Installation Flexibility:
Volute available in NPT and Victaulic on XS439 and flanged on XS869

Hefty 1-1/4" Double Keyed Impeller Shaft:
Ensures excellent reliability under all operating conditions

Wide Variety of Options:
Available in packing or mechanical seal.
Frame mount, SAE, and Hydraulic SAE #2 - #5



Rugged 2-3/8" Shaft:
High strength shaft eliminates shaft failure in the most severe applications

Heavy-Duty Bearing Frames:
Provides maximum bearing size capacity, delivering extensive life cycles

Space Saving Design:
Overall footprint allows for installation in limited space applications

Easy Access Packing Area:
Large opening provides easy access on both sides for improved serviceability

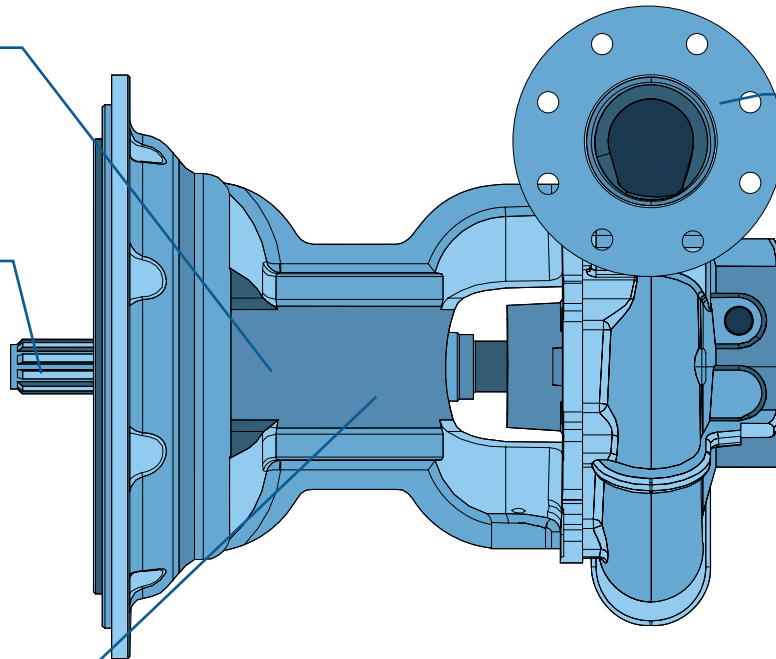


A HIGHER STANDARD | XS6413H CAST IRON OR STAINLESS STEEL

- **Heavy-Duty Bearing Frames:** Provides maximum bearing size capacity, delivering extensive life cycles.
- **Application Versatility:** Available in SAE, frame mount, and hydraulic drive.
- **Wide Variety of Applications:** Available in packing or mechanical seal.

Rugged 2-1/2" Shaft:
High strength shaft
machined to 1-1/2" 10T
spline on driven end

**Hefty Double Keyed
Impeller Shaft:**
Ensures excellent
reliability under all
operating conditions



Maximum Performance Range:
Performance available in flow
rates from 200-4000 gpm with
head to 400 ft

Balanced Design:
Hydraulically balanced
impeller, combined with
replaceable wear rings,
minimizes bearing axial load

Ease of Serviceability:

Large opening combined with two piece stainless packing gland provides easy access on both sides for improved packing service. Conveniently placed jackout holes decrease service times during disassembly. Lifting boss and mounting boss provide ease of handling and mounting

BETTER BY DESIGN

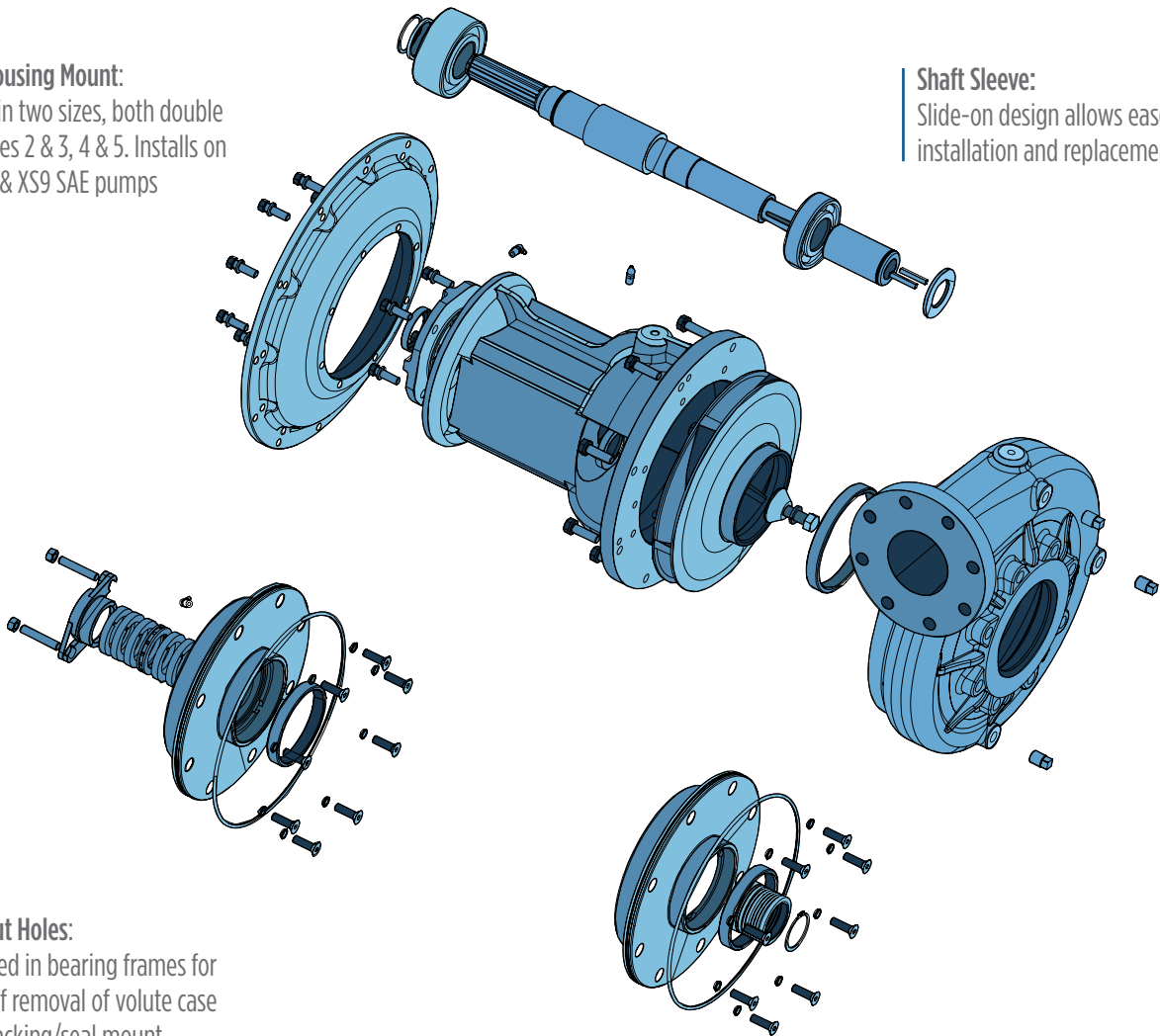
- **Heavy-Duty Bearing Frames:** Provides maximum bearing size capacity, delivering extensive life cycles.
- **Application Versatility:** Available in both SAE and frame mount.
- **Wide Variety of Applications:** Available in packing or mechanical seal.

SAE Bellhousing Mount:

Available in two sizes, both double drilled, sizes 2 & 3, 4 & 5. Installs on both XS13 & XS9 SAE pumps

Shaft Sleeve:

Slide-on design allows ease of installation and replacement



Jackout Holes:

Included in bearing frames for ease of removal of volute case and packing/seal mount

Packing/Seal Mount:

Modular design allows for packing or mechanical seal options

Lifting Bosses:

Bearing frames and volute cases include lifting bosses for ease of handling during assembly and installation



PUMP MODEL XS439 CAST IRON SERIES

- 9" impeller
- 4" suction, 3" discharge
- SAE, frame mount or hydraulic fit
- Clockwise and counterclockwise rotations
- Mount in vertical or horizontal position
- Victaulic or NPT threaded connections
- Packing or mechanical seal options
- All iron construction

Flows to 1000 GPM
Heads to 260' TDH

PUMP MODEL XS6413H CAST IRON SERIES

- 13" 316 series stainless steel impeller
- 6" suction, 4" discharge
- SAE, frame mount or hydraulic
- Clockwise rotation
- Mount in vertical or horizontal position
- Packing or mechanical seal options
- All iron construction

Flows to 4000 GPM
Heads to 330' TDH

PUMP MODEL XS869 CAST IRON SERIES

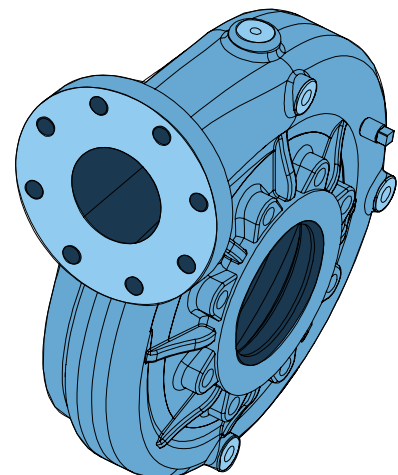
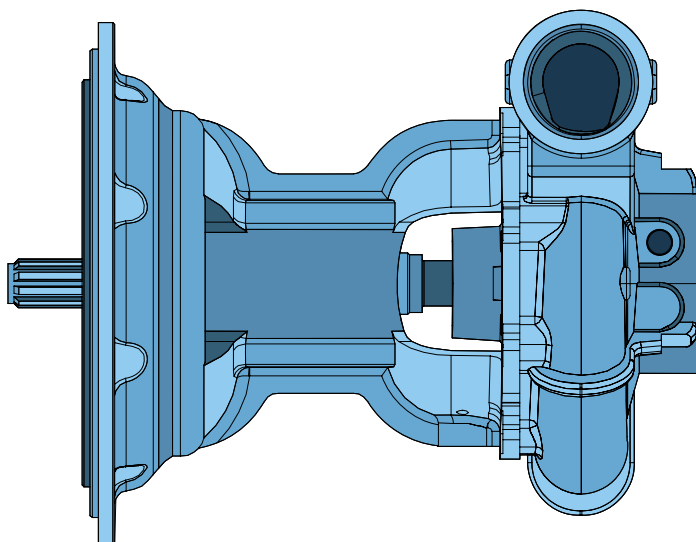
- 9" impeller
- 8" suction, 6" discharge
- SAE, frame mount or hydraulic fit
- Clockwise rotation
- Mount in vertical or horizontal position
- Flanged – Class 150 connections
- Packing or mechanical seal options
- All iron construction
- Tapped for priming, venting, and draining

Flows to 2000 GPM
Heads to 90' TDH

PUMP MODEL XS6413H STAINLESS STEEL SERIES

- 13" 316 series stainless steel impeller
- 6" suction, 4" discharge
- SAE, frame mount or hydraulic fit
- Clockwise rotation
- Mount in vertical or horizontal position
- Flanged – Class 150 connection
- Packing
- All wetted end parts are 316 SS
- Tapped for priming, venting, and draining

Flows to 4000 GPM
Heads to 330' TDH

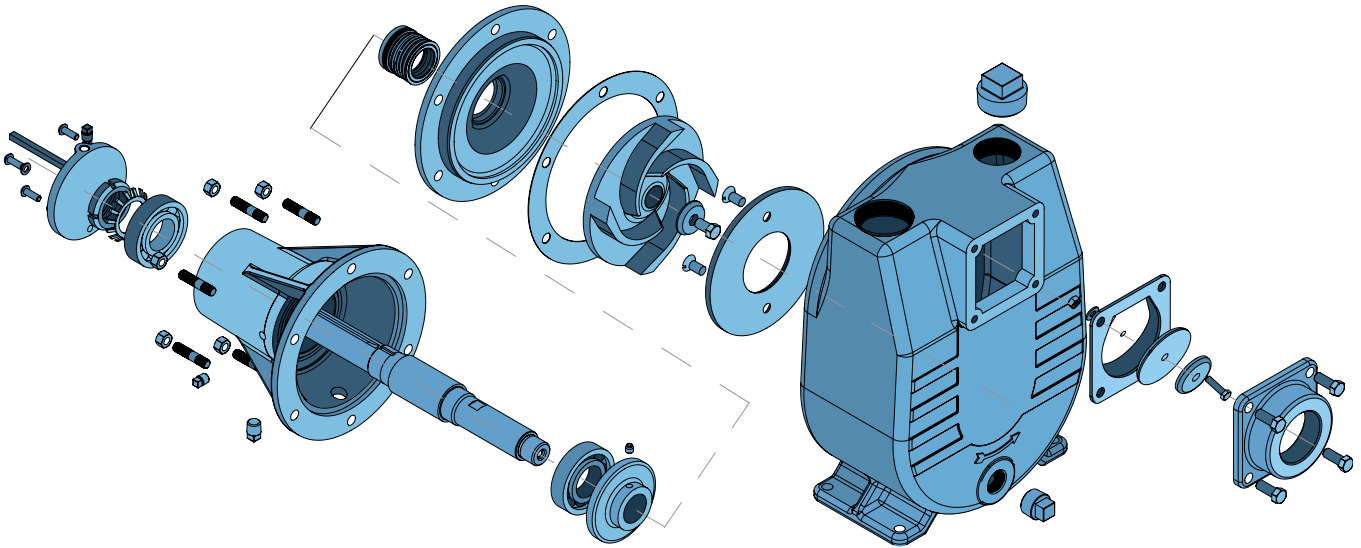


SELF-PRIMING FMIT 20-40 SERIES

- Impeller: Semi-open cast iron, non-clogging
- 3 Sizes – 2" x 2", 3" x 3", and 4" x 4"
- Volute: Cast iron rugged construction with tapped openings for priming, venting, and draining
- Bearing Frame: Bolt on or direct drive with duty sealed bearings with a keyed stainless steel shaft and replaceable wear plate for maximum efficiency
- Mechanical Seal: Supplied with carbon/ceramic faces, Viton elastomers, and 300 series stainless components
- NPT connections
- Clockwise rotation
- All iron body construction
- Available in hydraulic drive as FMIH 40 series only

Flows to 760 GPM

Heads to 175' TDH





XS9 SERIES

Pump Model: XS439 Series

- Frame mount, SAE, and hydraulic fit
- Clockwise and counterclockwise rotations
- Victaulic and NPT threaded connections
- All iron construction

Pump Model: XS869 Series

- Frame mount, SAE, and hydraulic fit
- Clockwise rotation only
- Flanged connections
- All iron construction
- Packing or mechanical seal options

Flows to 2000 GPM

Heads to 260' TDH

XS6X4-13H

- Pumps model XS2.5x3, XS3x4, XS4x6, XS6x8, and XS8x10
- Frame mount, SAE, and hydraulic drive
- Cast iron/stainless fitted (all stainless XS6x4-13H only)

Flows to 4000 GPM

Heads to 400' TDH

FMIT / FMIH SERIES SELF PRIMING PUMPS

- Frame mount (FMIT) and hydraulic drive (FMIH)
- Heavy-duty self primer - can handle 10% silt, mud, and sand
- Semi open impeller
- Working pressure - 120 psi max
- Clockwise rotation
- NPT connections
- Up to 1 3/8" solids handling

Flows to: 760 GPM

Heads to: 175' TDH

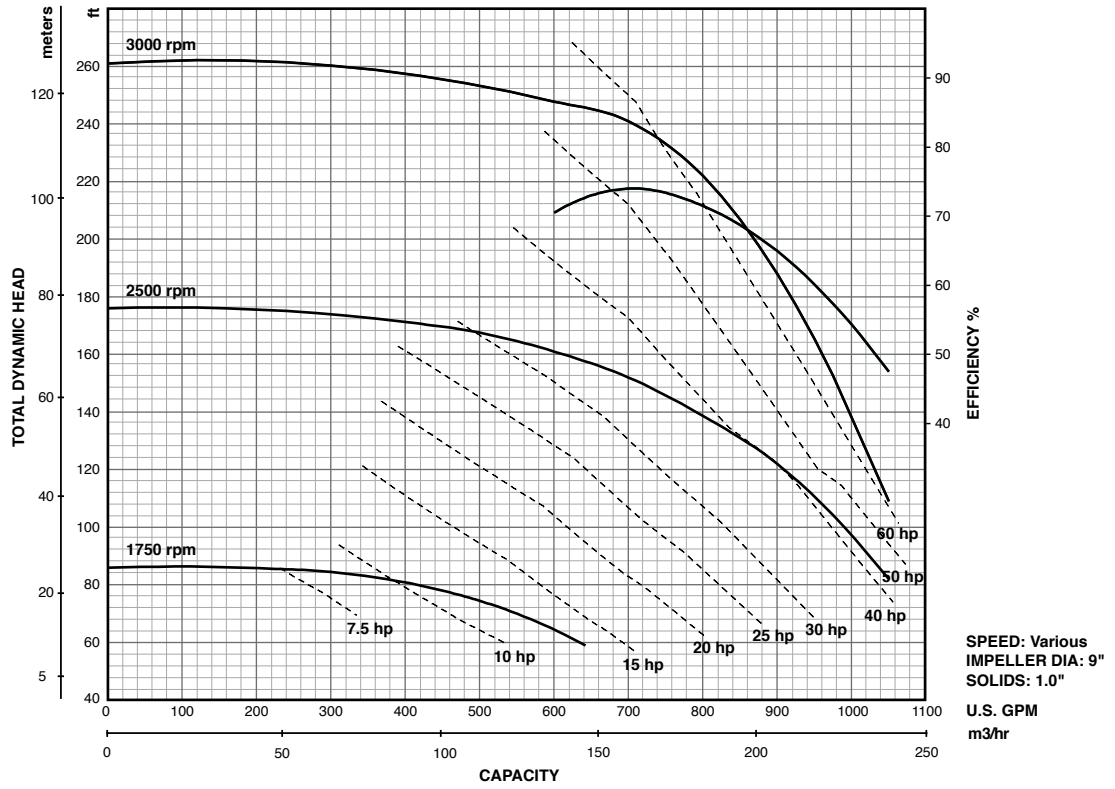
HYDRAULIC FITTED MODELS

- SAE "B" mounting used with 2 bolt or 4 bolt configuration
- XS9 Series available in B and C fit for hydraulic drive

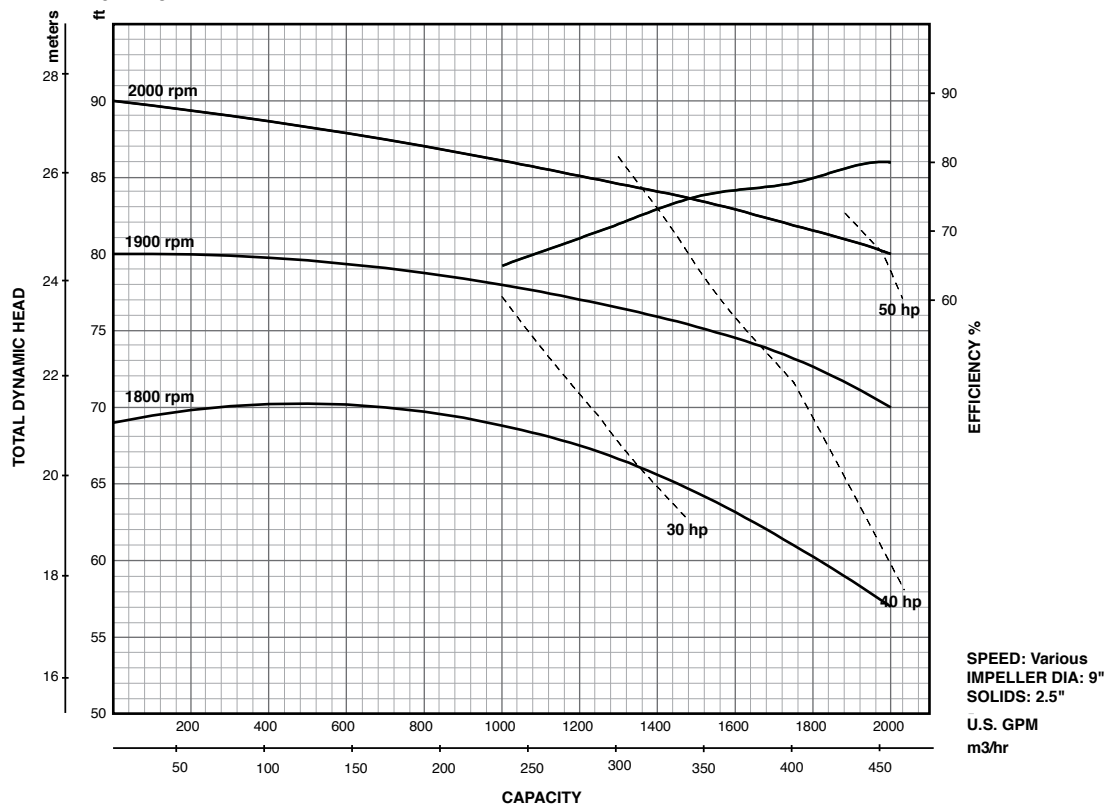


9" SERIES

3" X 4"



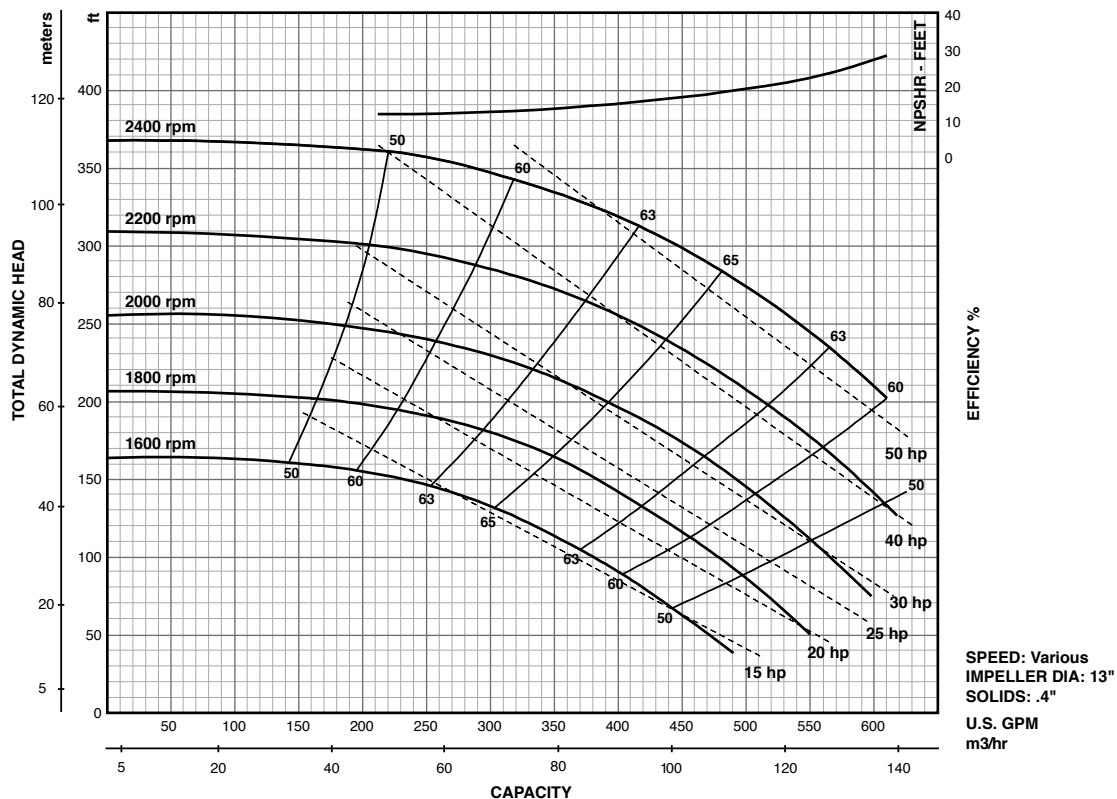
6" X 8"



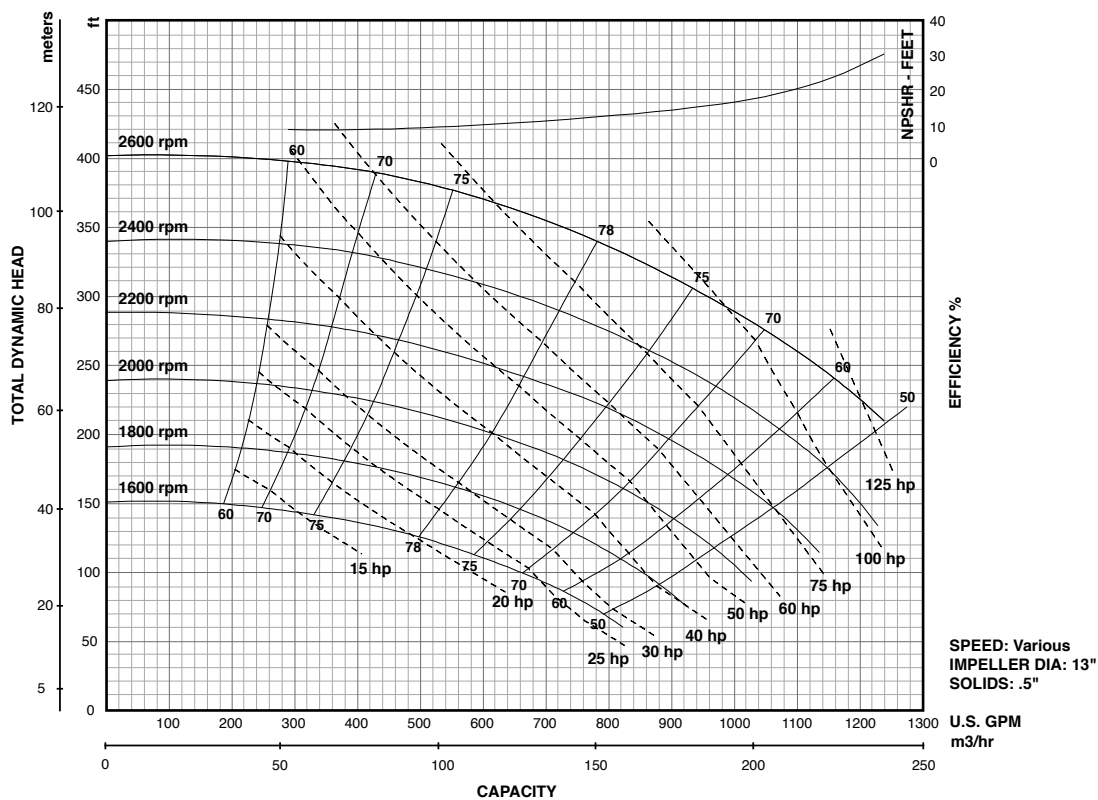


13" SERIES

2.5" X 3"



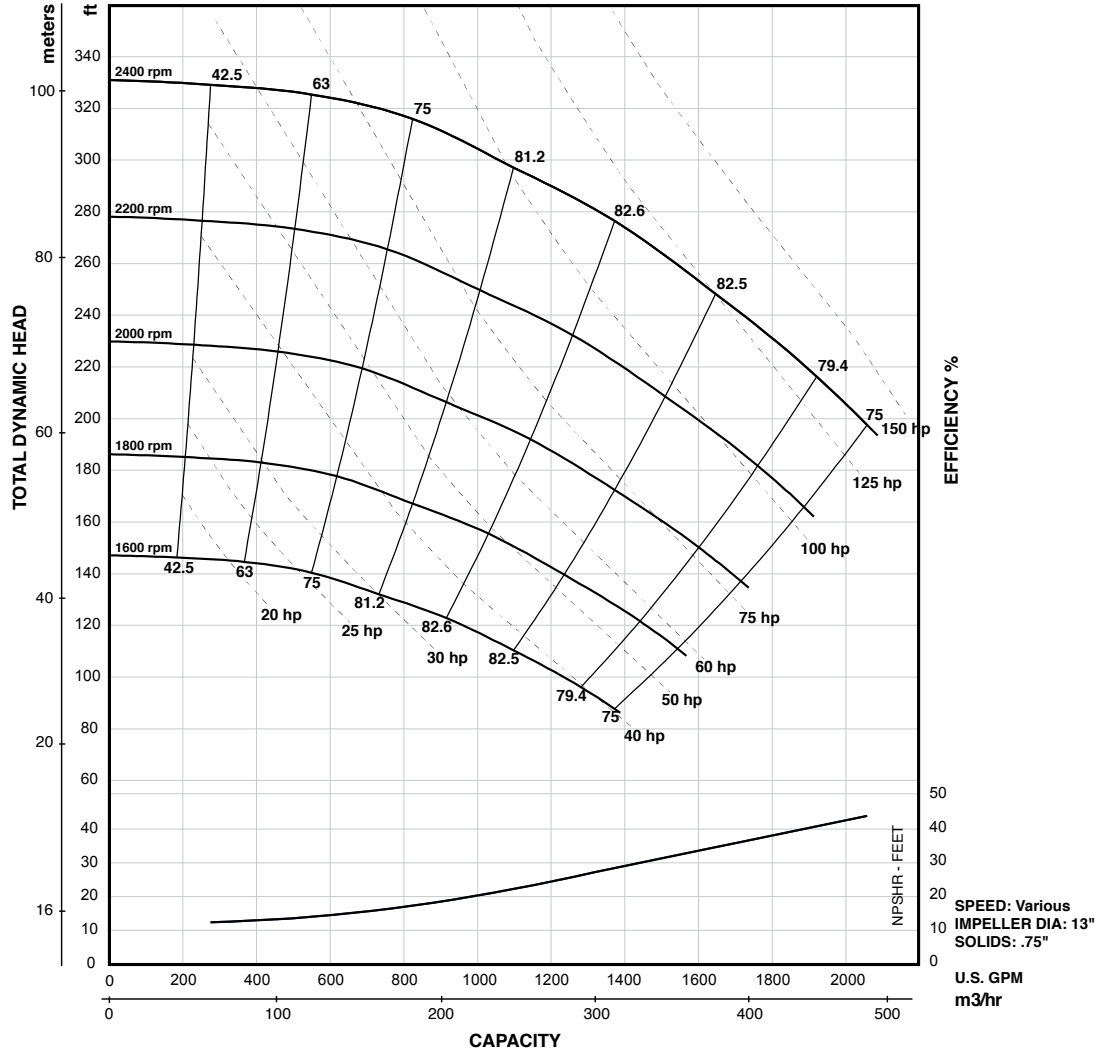
3" X 4"





13" SERIES

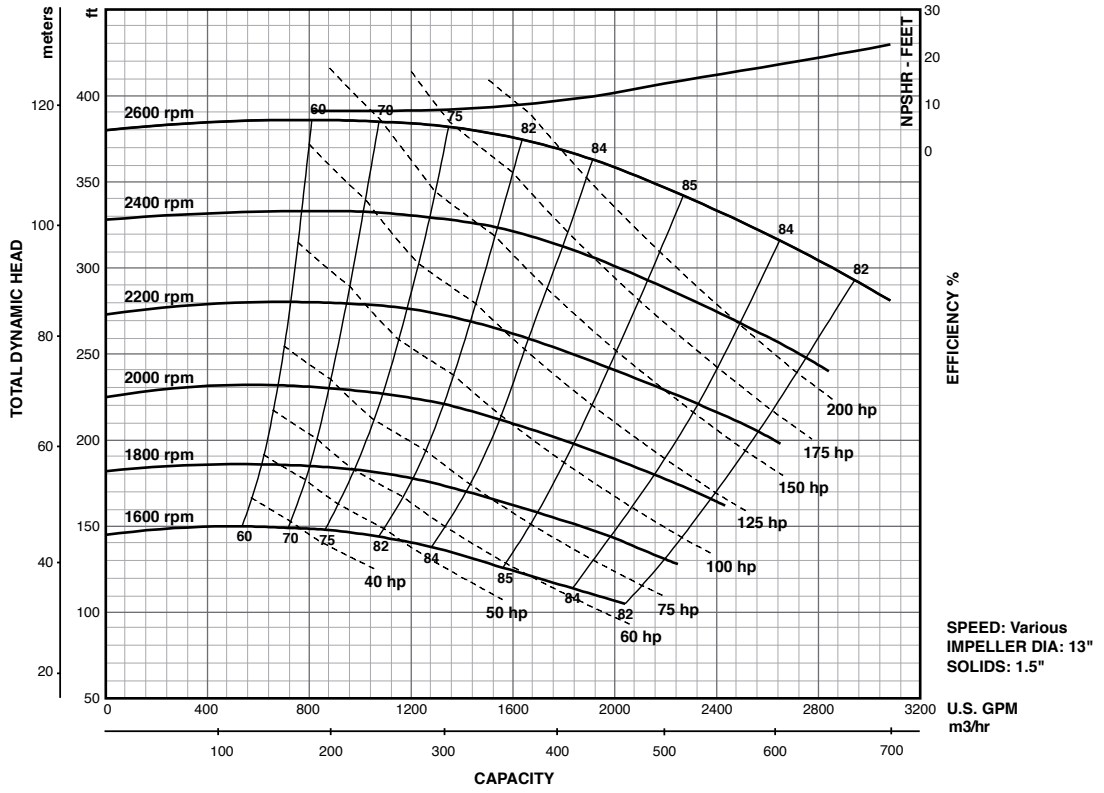
4" X 6"



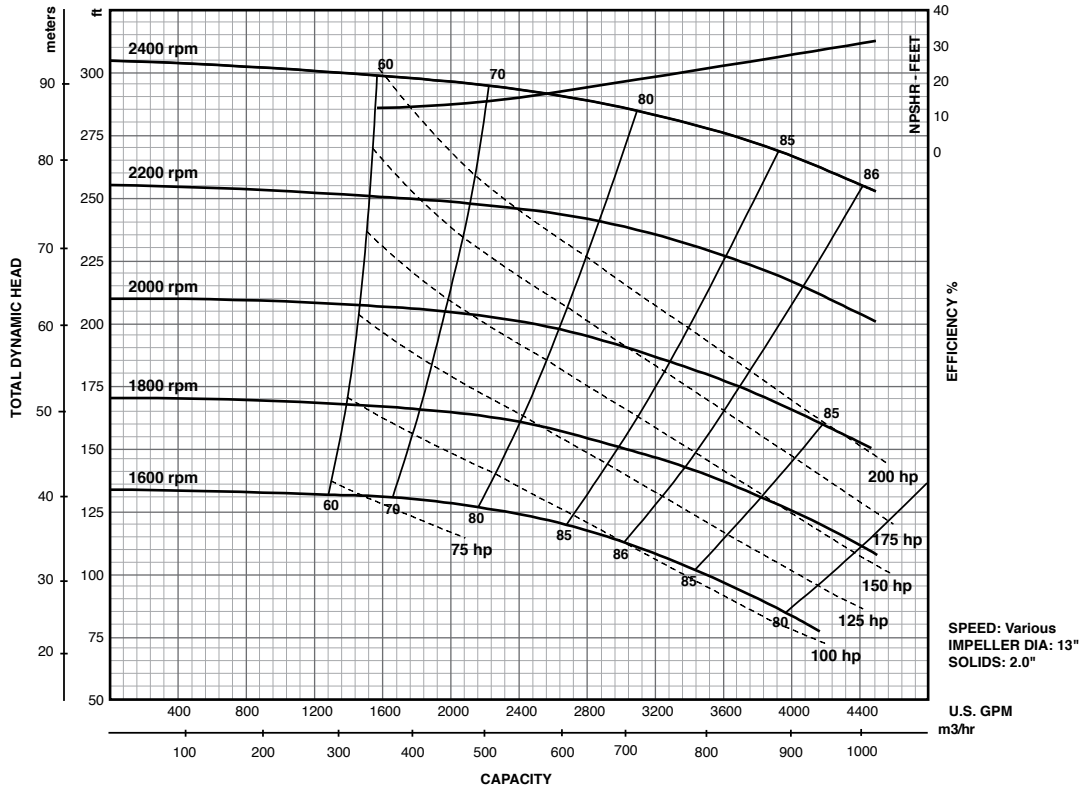


13" SERIES

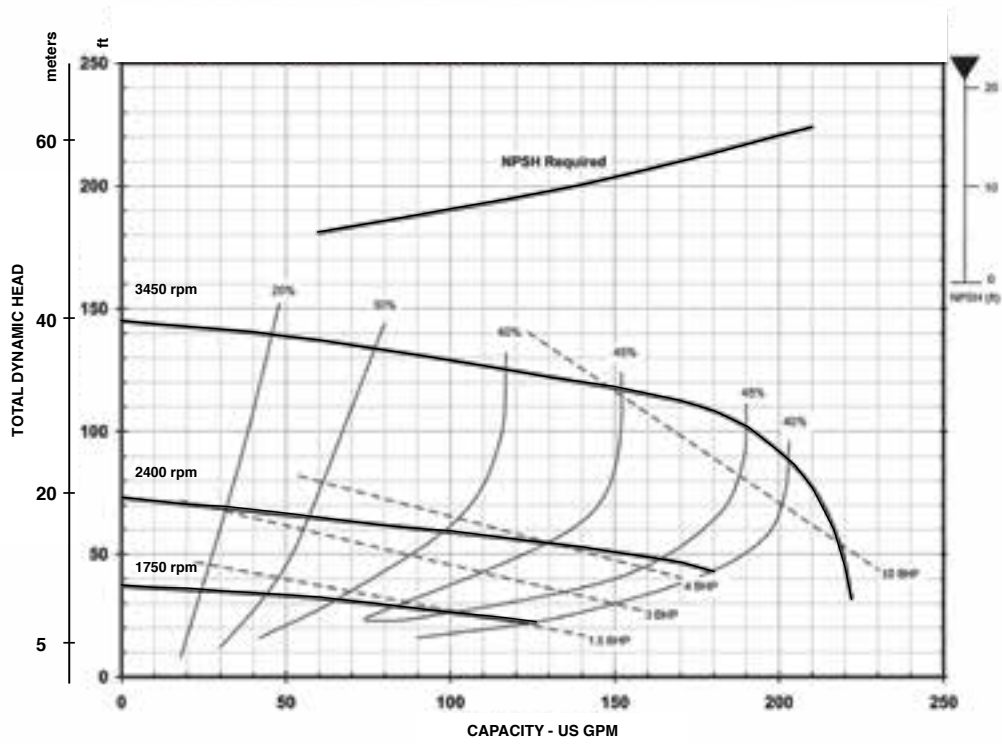
6" X 8"



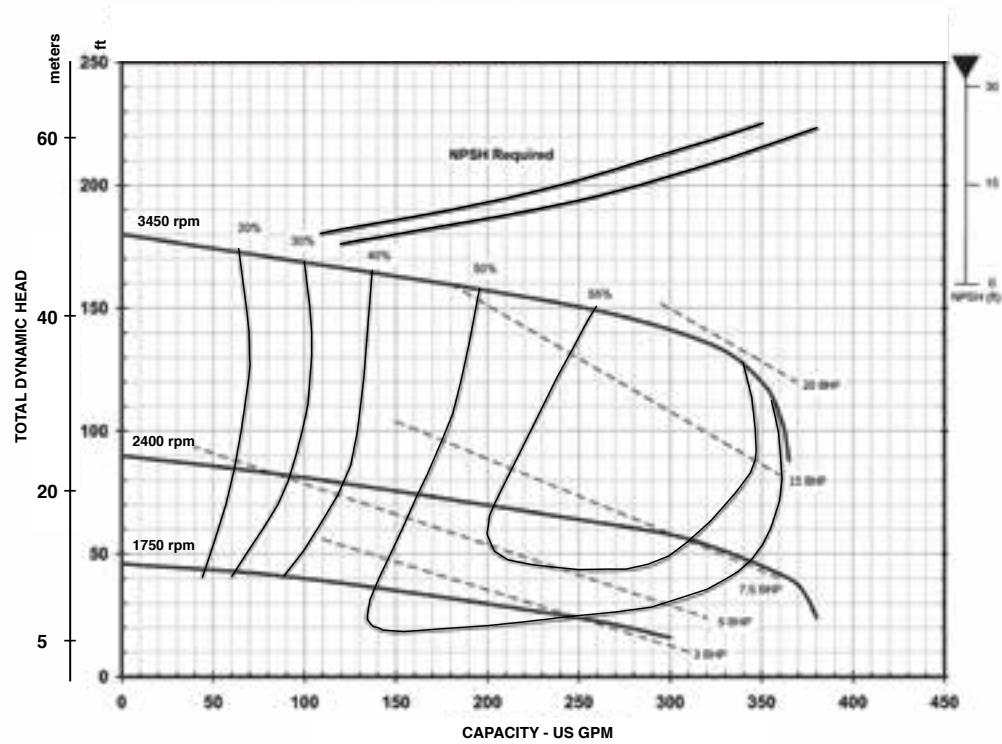
8" X 10"



FMIT 20

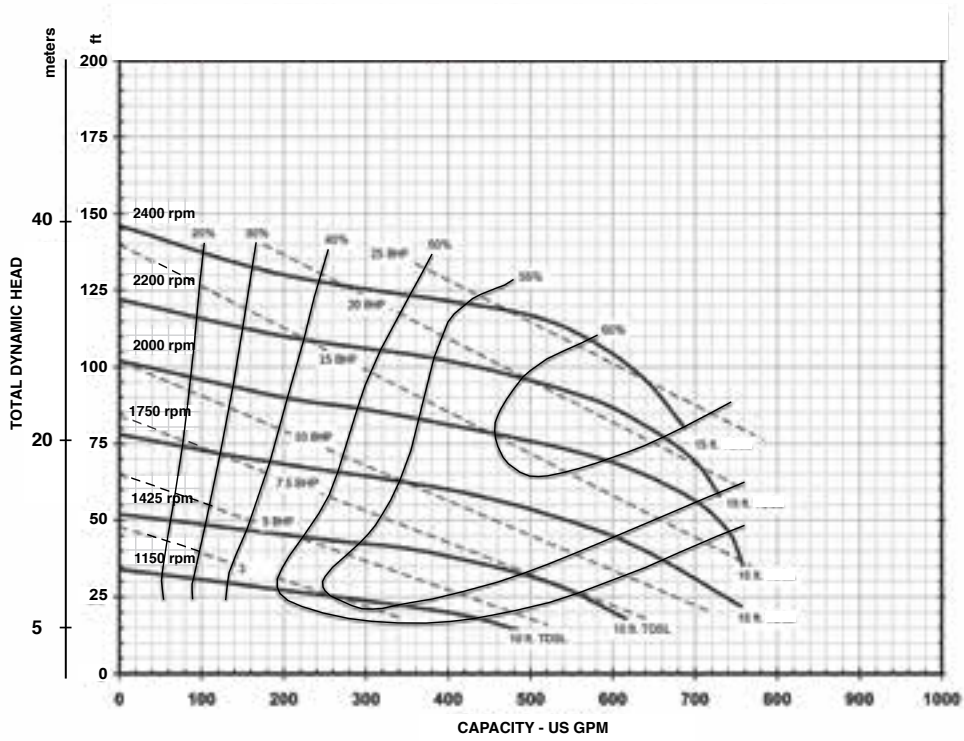


FMIT 30





FMIT / FMIH 40







franklinwater.com