

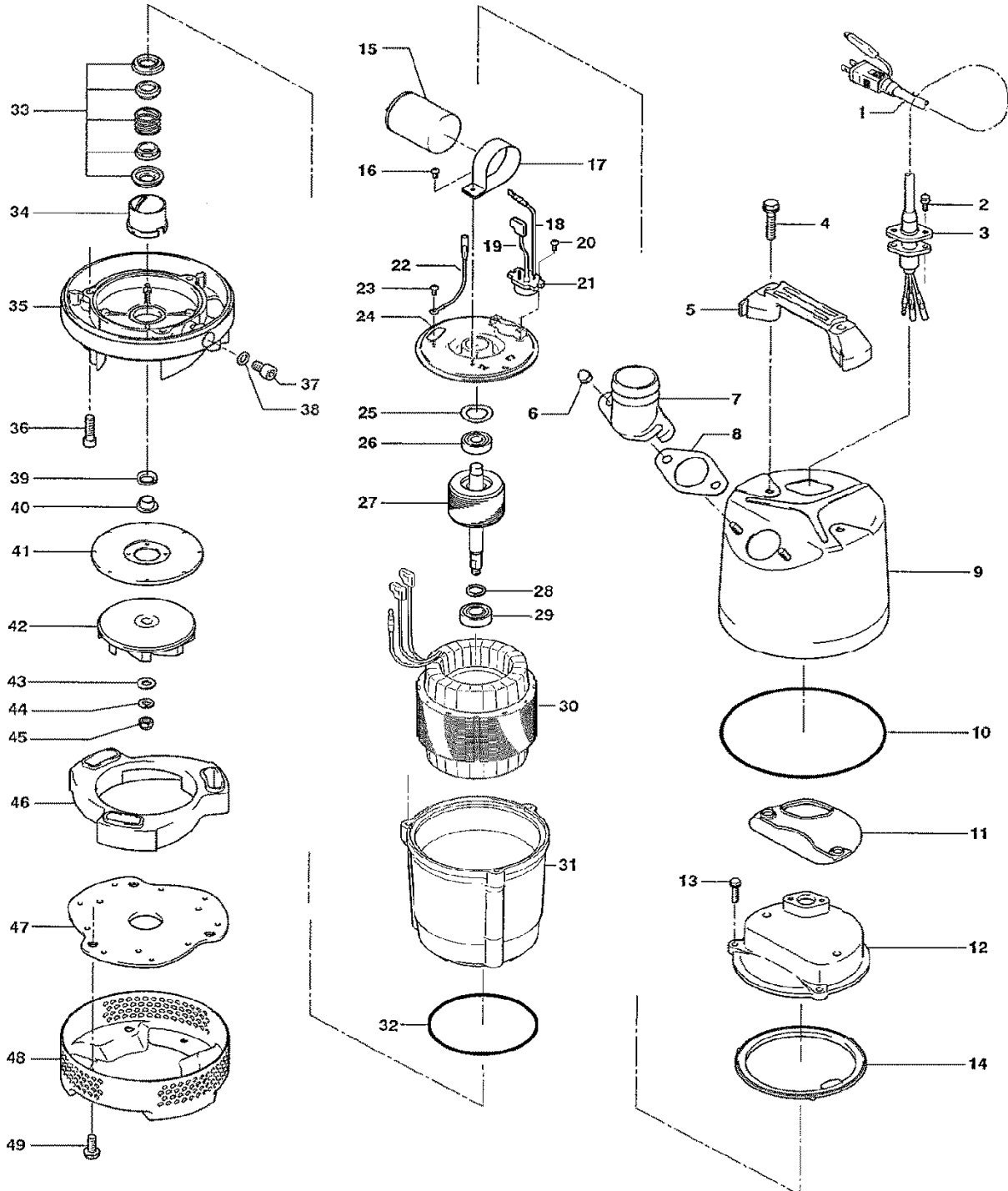
| PARTS LIST | | CONTRACTOR DEWATERING PUMP | | | 5/5/2022 | |
|------------|------------|---------------------------------------|------|----------------------------|------------------|---------------------------------|
| ITEM | PART No. | DESCRIPTION | QTY | SIZE | MATERIAL | NOTES |
| 1 | 001-471-25 | Cabtyre Cable Set (50')115V-60Hz(USA) | 1 | VCT3Cx2mm2(CSA) | LB | |
| | 001-443-44 | Cabtyre Cable Set (50')230V-60Hz(USA) | 1 | VCT3Cx2mm2 | LB | |
| 2 | 140-427-17 | Hex.Bolt (w/Plain Washer) | 2 | M5x15 | SUS304 | |
| 3 | 003-190-10 | Gland | 1 | | SUS316 | |
| 4 | 140-000-13 | Hex.Bolt (w/Plain Washer) | 2 | M8x65 | SUS304 | |
| 5 | 068-000-06 | Handle | 1 | LB-250/480-52/62 | Resin | |
| 6 | 141-144-10 | Hex.Nut (w/Flange) | 2 | M8 | SUS304 | |
| 7 | 032-426-18 | Hose Coupling 2" | 1 | NPT-2(LB-480-51/61) | ADC | |
| | 032-000-75 | Hose Coupling 3" OPTION | 1 | NPT-3 | ADC | 3" OPTION |
| 8 | 121-587-17 | Packing | 1 | LB-250/480-51/61 | NBR | * |
| 9 | 065-000-22 | Outer Cover | 1 | | SPC | |
| 10 | 122-453-16 | O-Ring | 1 | 172xd2.7 | NBR | * |
| 11 | 121-002-09 | Packing | 1 | LB3-250/480 | Synthetic Rubber | * replaces OLD part# 021-434-18 |
| 12 | 051-000-55 | Head Cover | 1 | | ADC | |
| 13 | 140-396-16 | Hex.Bolt (w/Plain Washer) | 3 | M6x20 | SUS304 | |
| 14 | 121-546-14 | Packing | 1 | d120xd142x6.2t | NBR | * |
| 15 | 076-000-47 | Capacitor 115V-60Hz(USA) | 1 | 66MF-270VAC(d51x70L) | | |
| | 076-000-48 | Capacitor 230V-60Hz(USA) | 1 | 20MF-500VAC(d51x70L) | | |
| 16 | 143-085-21 | Pan Screw (w/Spring Washer)(1st) | 1 | M4x6 | SWRM | |
| | 143-086-22 | Pan Screw (w/Spring Washer)(2nd) | 1 | M4x8 | SWRM | |
| 17 | 127-000-46 | Capacitor Fixing Plate(1st) | 1 | d51(0.5t) | SPC | |
| | 127-000-99 | Capacitor Fixing Plate(2nd) | 1 | d51(1.0t) | SPC | |
| 18 | 009-001-03 | Intermediate Lead Wire | 1Set | AWG16x160(red) | | |
| 19 | 009-001-42 | Intermediate Lead Wire | 1Set | AWG16x80(Indigo) | | |
| 20 | 143-000-43 | Truss Screw | 2 | M4x8 | SWRM | |
| 21 | 053-001-96 | Motor Protector 115V-60Hz(USA) | 1 | KA142-LABL22F | (T.C) | |
| | 053-002-00 | Motor Protector 230V-60Hz(USA) | 1 | KA142-LYVL22F | (T.C) | |
| 22 | 009-001-02 | Earth Terminal | 1Set | UL1015- AWG18,G/Y,L=160 | | |
| 23 | 143-203-14 | Pan Screw | 1 | M4x5 | C360 | |
| 24 | 050-000-61 | Motor Bracket | 1 | | SECD | |
| 25 | 142-000-41 | Wave Washer | 1 | #6201(T=0.4) | S65CM | |
| 26 | 052-100-15 | Bearing | 1 | 6201ZZC3 | | |
| 27 | 055-002-98 | Rotor | 1Set | w/Bearing | | |
| 28 | 061-180-17 | Bearing Collar | 1 | d15.1xd20x1.6t | SS | |
| 29 | 052-152-12 | Bearing | 1 | 6302ZZC3 | | |
| 30 | 056-008-25 | Stator 115V-60Hz(USA) | 1Set | | | |
| | 056-008-26 | Stator 230V-60Hz(USA) | 1Set | | | |

| PARTS LIST | | CONTRACTOR DEWATERING PUMP | | | 5/5/2022 | |
|------------|------------|------------------------------|------|------------------------|------------------|---------------------------------|
| ITEM | PART No. | DESCRIPTION | QTY | SIZE | MATERIAL | NOTES |
| 31 | 064-001-27 | Motor Frame | 1 | | ADC | |
| 32 | 122-133-17 | O-Ring | 1 | G-110(109.4xd3.1) | NBR | * |
| 33 | 025-291-10 | Mechanical Seal | 1 | W-14VL | SSIC | |
| 34 | 030-000-09 | Oil Lifter | 1 | W-14VL | Resin | |
| 35 | 029-000-72 | Oil Casing | 1 | LB-750-51/61 | ADC | |
| 36 | 140-252-19 | Hex.Socket Cap Bolt | 3 | M6x20 | SUS304 | |
| 37 | 035-124-12 | Oil Plug | 1 | M10x15 | SUS304 | |
| 38 | 121-246-11 | Packing | 1 | d10.3xd16x2t | PE | * |
| 39 | 122-441-11 | V-Ring | 1 | VR-14 | NBR | |
| 40 | 071-292-14 | Shaft Sleeve | 1 | LB3-250/480 | SUS304 | |
| 41 | 031-000-12 | Wear Ring | 1 | LSC1.4S-51/61 | SPC+Rubber | |
| 42 | 021-007-56 | Impeller (60Hz) | 1 | LB-800-62 | Urethane Rubber | |
| 43 | 142-127-10 | Plain Washer | 1 | M8 | SUS304 | |
| 44 | 142-163-18 | Spring Washer | 1 | M8 | SUS304 | |
| 45 | 141-030-12 | Hex.Cap Nut | 1 | M8 | SUS304 | |
| 46 | 020-000-43 | Pump Casing | 1 | LB-750 | BR+NR | |
| 47 | 022-001-27 | Suction Cover | 1 | LSC1.4S-51/61 | SPC+Rubber | |
| 48 | 023-547-18 | Strainer Stand | 1 | LB-250/480-51/61 | SPCC | |
| 49 | 140-000-14 | Hex.Bolt (w/Plain Washer) | 3 | M8x20 | SUS304 | |
| | 173-567-12 | Packing O-Ring Set | 1Set | (Marked by *) | | |
| 8 | 121-587-17 | Packing (Hose Coupling) | 1 | LB-250/480-51/61 | NBR | * |
| 10 | 122-453-16 | O-Ring (Out.Cover/O.Casing) | 1 | 172xd2.7 | NBR | * |
| 11 | 121-002-09 | Packing | 1 | LB3-250/480 | Synthetic Rubber | * replaces OLD part# 021-434-18 |
| 14 | 121-546-14 | Packing (Head Cover/M.Frame) | 1 | d120xd142x6.2t | NBR | * |
| 32 | 122-133-17 | O-Ring (M.Frame/O.Casing) | 1 | G-110(109.4xd3.1) | NBR | * |
| 38 | 121-246-11 | Packing (Oil Plug) | 1 | d10.3xd16x2t | PE | * |
| | | Lubricant | | Turbine Oil VG32 155ml | | |

| PARTS LIST | | CONTRACTOR DEWATERING PUMP | | | 5/5/2022 | |
|------------|----------|----------------------------|-----|------|----------|-------|
| ITEM | PART No. | DESCRIPTION | QTY | SIZE | MATERIAL | NOTES |

EXPLODED VIEW

LB-800-52/62



C-01572-1

* Indicates items included in set